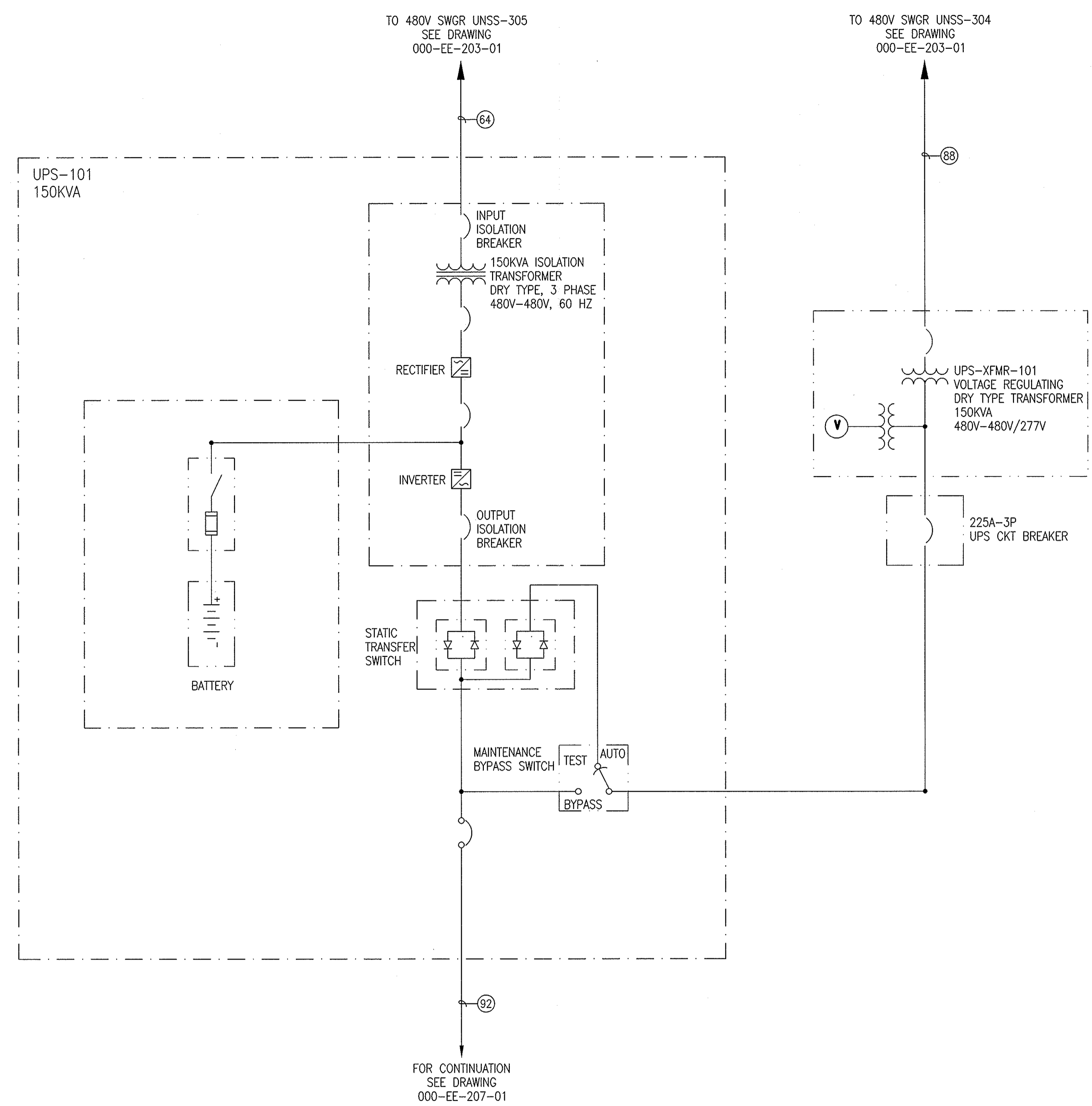


A
B
C
D
E



NOTES:
1. UPS IS LOCATED IN UNIT SUBSTATION BLDG. UNSS-305.



THIS DOCUMENT AND THE DESIGN IT COVERS ARE THE PROPERTY OF RTI INTERNATIONAL METALS, INC. THEY ARE LOANED ONLY WITH THE BORROWER'S EXPRESSED WRITTEN AGREEMENT THAT THEY WILL NOT BE REPRODUCED, COPIED, LOANED, EXHIBITED, OR USED IN ANY OTHER WAY, EXCEPT BY WRITTEN CONSENT FROM RTI INTERNATIONAL METALS, INC. TO THE BORROWER.

TITANIUM SPONGE PLANT HAMILTON, MS	
TITLE UPS SINGLE LINE DIAGRAM SITE OVERALL	
DRAWING NUMBER	REV
000-EE-0206-01	0

DESIGN FILE: S:\CAD\EE\ACAD\SHETS\000\000EE0206S01.DWG
PLOTTED BY: ZUNIGA, RUBEN ON 7/31/2008 11:37:13 AM

REFERENCES		REVISIONS										FOR								
DRAWING NO.	DESCRIPTION	NO.	DATE	BY	CK	DL	PE	APVD	DESCRIPTION	NO.	DATE	BY	CK	DL	PE	APVD	DESCRIPTION	APVD SECT	APVD PROJ	APVD CLIENT

